

MRC-988 Blow Torch

READ CAREFULLY THE INSTRUCTIONS BEFORE USING THE APPLIANCE. KEEP THE INSTRUCTION FOR FUTURE USE.

Gas Refilling

- Prior to filling with purified butane, make sure the gas refill valve is tight.
 - Use only high quality purified butane gas.
 - Shake gas container a few times to warm fuel up.
 - Move Flame Adjustment Slide (2) to "-" position.(Fig.A).
 - Insert the container nozzle vertically down into the gas refill valve. (Fig.B).
 - Use a pumping action for best result.
- After fueling, allow a few minutes for gas to stabilize.

Warning: The gas will escape while the gas tank is filled with gas at full. Don't try to refill more gas in.

Igniting

- Move Flame Adjustment Slide(2) to "+" position. (Fig.C).
 - Push up the Lock Switch (3) until it clicks in place (Fig.D).
- For safety reasons, the ignitor button will not depress unless lock switch (3) is locked in place!
- Press Ignitor Button (4). and the flame will ignite instantly (Fig.E).

Using Continuous flame feature

CAUTION: use extreme caution when flame is locked on as flame will be continuous and will not turn off until the Lock Switch (3) is MANUALLY disengaged.

- While holding down the Ignitor Button (4), push down the Lock Switch (3). (Fig.F)
- Release the Ignitor Button (4), the flame will remain on. (Fig.G)
- If flame lock switch is being activated (at lower position), press lock switch upward to shut off the gas flow.(Fig.H)

Flame Adjustment

- Adjust the flame length during use by moving the Flame Adjustment Slide (2). Don't make the flame too long as it will only wastes fuel and make the flame unstable.
- At higher altitudes, torch may not operate on maximum flame length setting (with slide pushed all the way to "+").
- For best results, adjust the slide to the mid-range between "+" and "-".

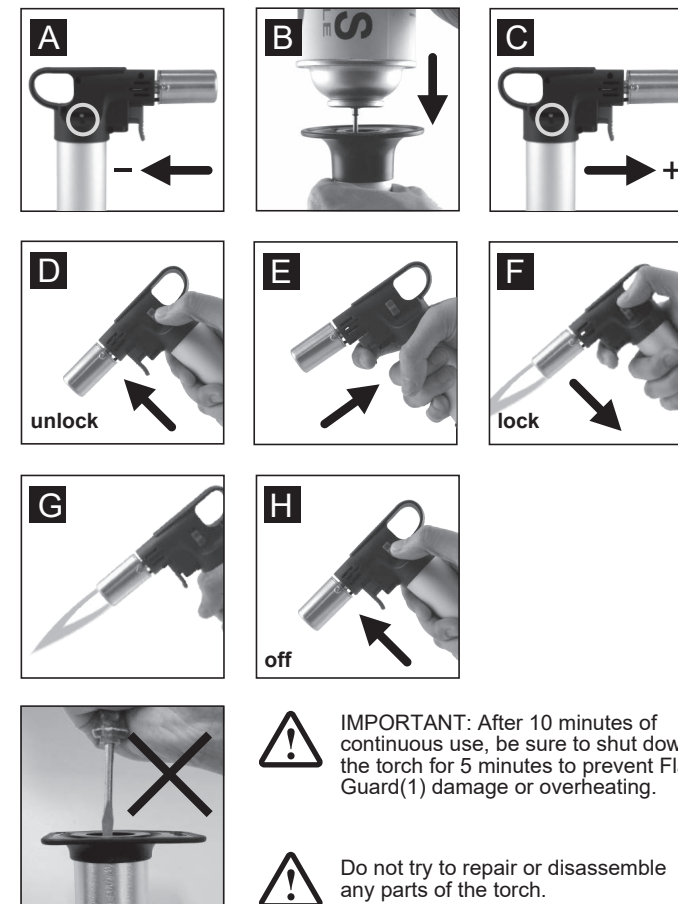
Turning off and Storage

- To turn the flame off, simply release ignitor button.
- When the flame is locked, please push the lock switch (3) up to turn off the flame. (Fig.H)
- Make sure that torch/tips are cool before storing or leaving unattended.

Warning

- Read carefully the instructions before using the appliance. Keep the instruction for future use.
- Operation outside or in a well-ventilated place.
- Use only Butane lighter fuel.
- Keep the torch and gas cartridge out of reach of children.
- Do not use an appliance which shows any damage.
- Butane is very flammable, handle with care.
- Refill the tank in a well-ventilated place, in a flame or ignition source free atmosphere, far from other persons. Do not smoke while replacing or refilling.
- Before refilling the device. Read the instructions printed on the gas cartridge.
- Always have a fire extinguisher near the torch and work area.
- Disassembling, modifying the torch or adding parts may be hazardous.
- Never attempt to repair the torch and never use unapproved fuels.
- Do not perforate or burn the gas cartridges even when they are empty.
- For environmental reasons the gas cartridges should be disposed in specific containers for subsequent recycling.
- Avoid breathing welding / soldering fumes. Use a ventilator to maintain good ventilation.
- Work only in a clean place, far from combustible or greased materials.
- Do not point the flame to any person or flammable materials
- Allow the appliance to cool down normally after using. Make sure that the appliance is shut down before storing.
- Warning! The flame is not highly visible in the sun.
- Do not store in temperatures over 40°C(104°F). Never leave the torch in direct sunlight or in areas where high temperatures are generated.
- Store the device vertically.
- Pay attention that the safety lock jumps to its original position after use.
- Keep the appliance away from grime. Be careful not to drop the gas torch while using, as it's the most frequent reason for malfunction.
- Caution: the flame guard could be very hot after using.
- In case that a gas leak (smell of gas), take the appliance outside to a well-ventilated place immediately, where the leak may be checked.
- Never check the leakage with flame but only with leak detection spray.
- Do not put an ignited appliance unattended at any time.

Parts Identifications



• Category: direct pressure butane. • Use purified butane gas. • Only use in well ventilated areas. • Consumption rate: 44g/hr (0.6KW) • Be sure flame is out after use. • Follow all instructions and warnings provided by manufacturer of appliance. • Flame guard may become very hot. • Keep away from children. • Recommend to refill the gas after using 15 minutes to make sure flame is in the good position.

